



Chris Burdette

Sex

Active

Male

In the last day



Add connection



Send a message

Your genetic relationship

Predicted relationship

Fourth Cousin

[View DNA details](#) 

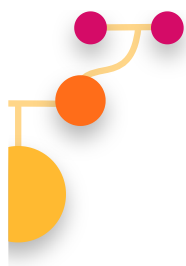
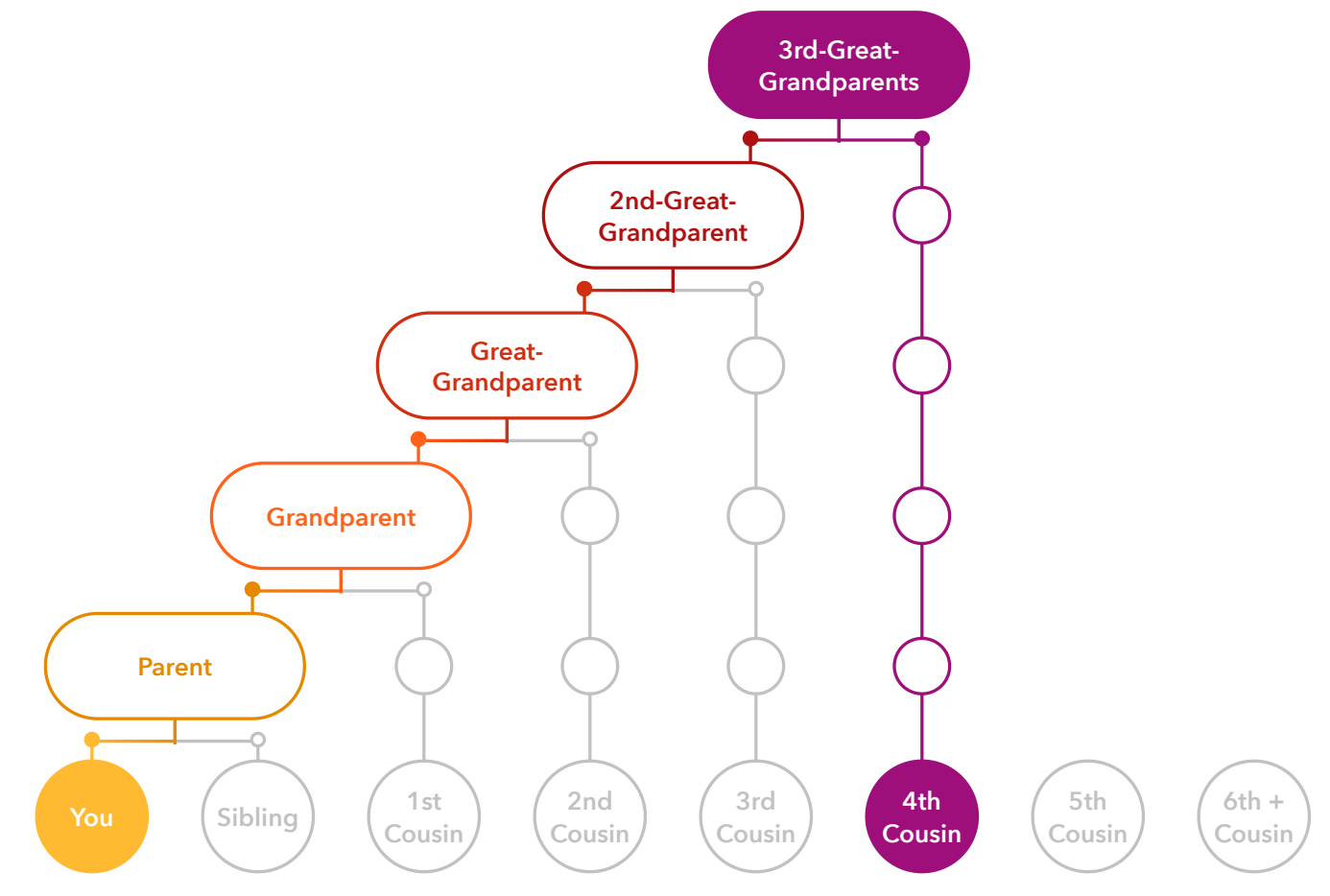


To your knowledge, is Chris Burdette your Fourth Cousin?

Yes, this relationship is correct

No, I want to edit this relationship

You and Chris may share a set of 3rd-great-grandparents. You could also be from different generations (removed cousins) or share only one ancestor (half cousins).



Next step: Are you ready to add Chris to your tree?

Before manually adding Chris to your tree, you must confirm or edit the relationship. If you're not sure how you're related to Chris, you can always do this step later.

[Manually add to tree](#)

Family Background

You

Chris

Maternal grandmother's birthplace

You

West Point, Clay County, Mississippi,
United States

Chris

Maternal grandmother's birthplace

West Point, Clay County, Mississippi,
United States

Maternal grandfather's birthplace

You

Culpeper, Culpeper County, Virginia,
United States

Chris

Maternal grandfather's birthplace

Culpeper, Culpeper County, Virginia,
United States

Paternal grandmother's birthplace

You

Chris

Paternal grandmother's birthplace

Paternal grandfather's birthplace

You

Smith County, Tennessee, United States

Chris

Paternal grandfather's birthplace

Smith County, Tennessee, United States

Other ancestors' birthplace

You

Chris

Other ancestors' birthplace

Family surnames

You

Moore, Gordon, Bolton, Cole, Lett
1 more... [View all](#)

Chris

Family surnames

Moore, Gordon, Bolton, Cole, Lett
1 more... [View all](#)

Family tree

You

Chris

Family tree

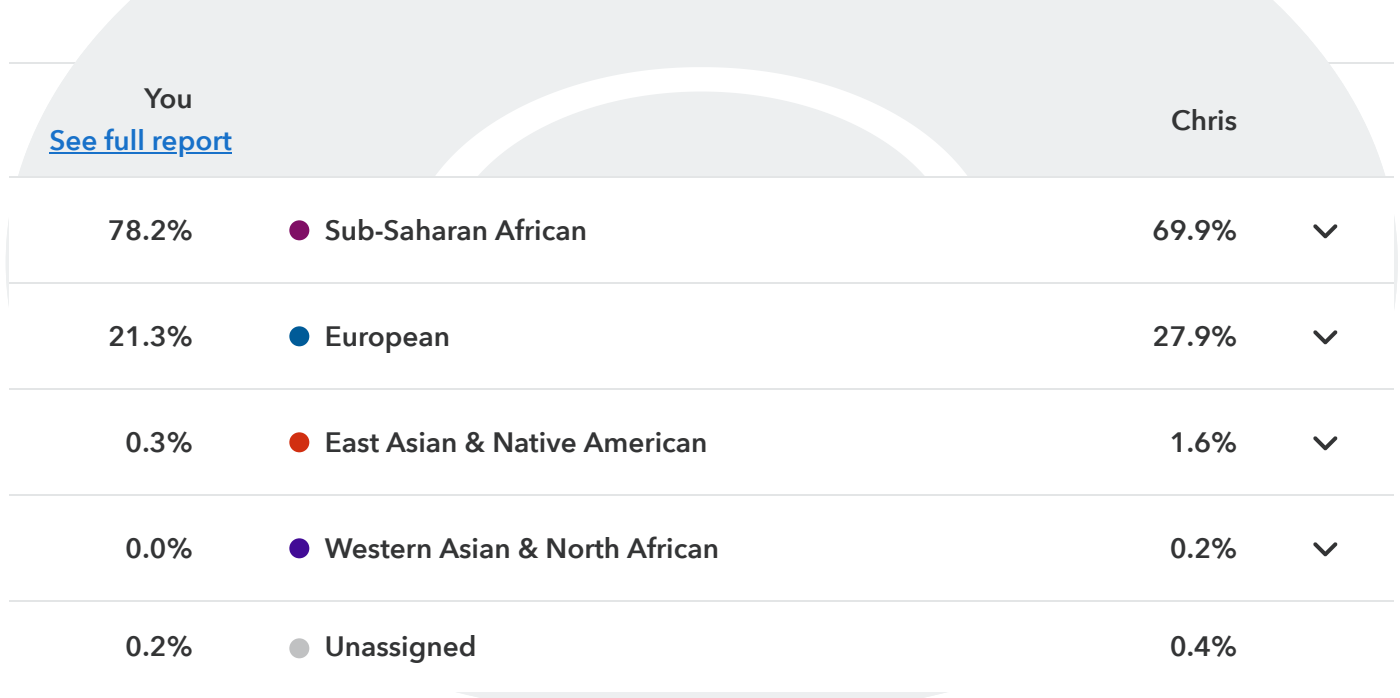
[Edit](#)

Compare your Ancestry

Compare your genetic ancestries to discover your shared origins and unique family histories.

Ancestry Comparison

Explore Chris's



Maternal Haplogroup

Maternal haplogroups identify unbroken lines of women that all trace back to the same ancient common ancestor.

You

L3e2a

[See full report](#)

Chris

L2a1f

Because your haplogroups do not match, you are most likely not recently related through a direct line of female ancestors.

Paternal Haplogroup

Paternal haplogroups identify unbroken lines of men that all trace back to the same ancient common ancestor.

You

E-P252

[See full report](#)

Chris

E-M4254

Neanderthal Ancestry

You have more Neanderthal variants than

1% of 23andMe customers.

[See full report](#)

Chris has more Neanderthal variants than

2% of 23andMe customers.

You have Relatives in Common

Each Relative in Common shares at least one small segment of DNA with Chris.

[Find Relatives in Common](#)



Improve this experience! Answer a few quick questions [✓](#)

Notes

Write a note. Anything you enter will be searchable and viewable only by you.



ANCESTRY

[Ancestry Overview](#)

[All Ancestry Reports](#)

[Ancestry Composition](#)

[DNA Relatives](#)

[Order Your DNA Book](#)

HEALTH & TRAITS

[Health & Traits Overview](#)

[All Health & Traits Reports](#)

[My Health Action Plan](#)

[Wellness](#)

[Traits](#)

RESEARCH

[Research Overview](#)

[Surveys and Studies](#)

[Edit Answers](#)

[Publications](#)

FAMILY & FRIENDS

[View all DNA Relatives](#)

[Family Tree](#)

[Your Connections](#)

[GrandTree](#)

[Advanced DNA Comparison](#)